

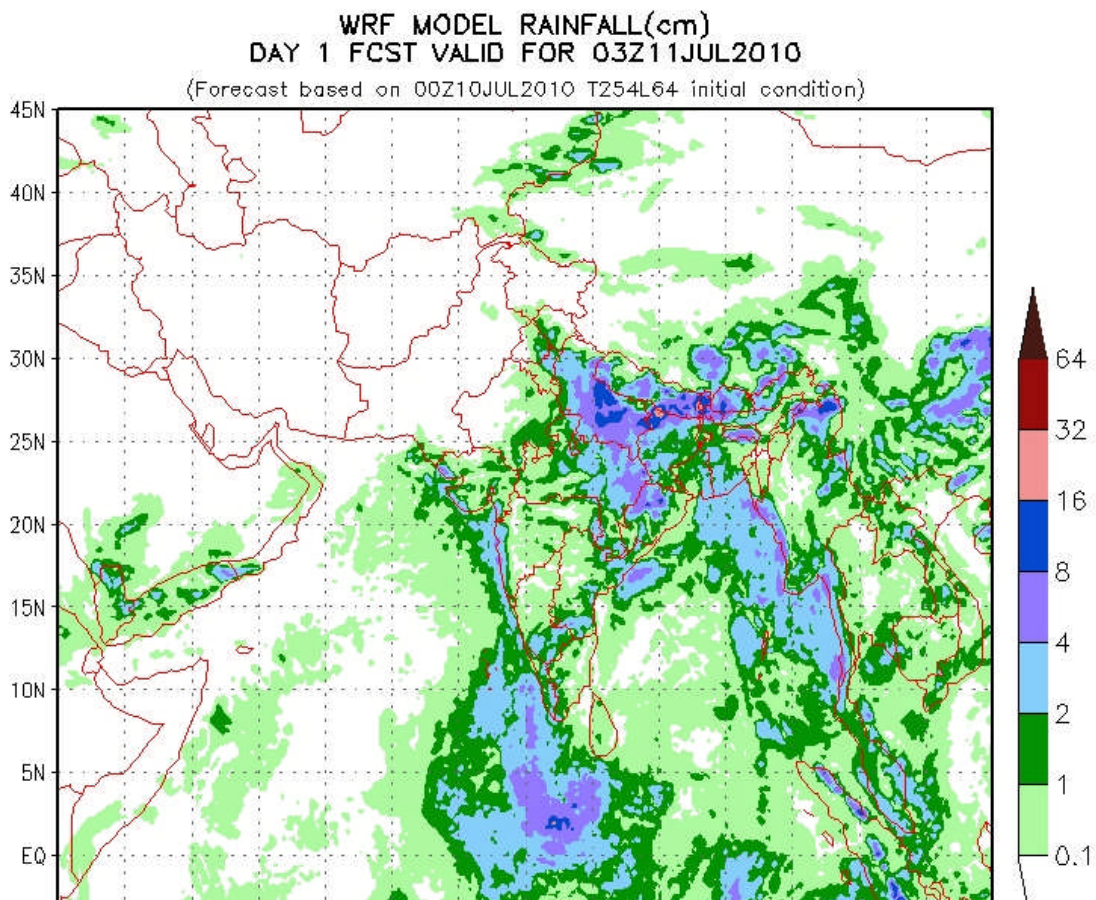
## **Daily Flood Forecasting Report**

**Date: 11 July, 2010**

**Time: 10:00**

### **Today's Situation**

**Rainfall: Cloudy with rain more than 100 mm at many places of the Eastern and Central part. Narayanghat, Karmaiya, Danda, Garuda, Pokhara and Simara have rainfall more than 100 mm.**



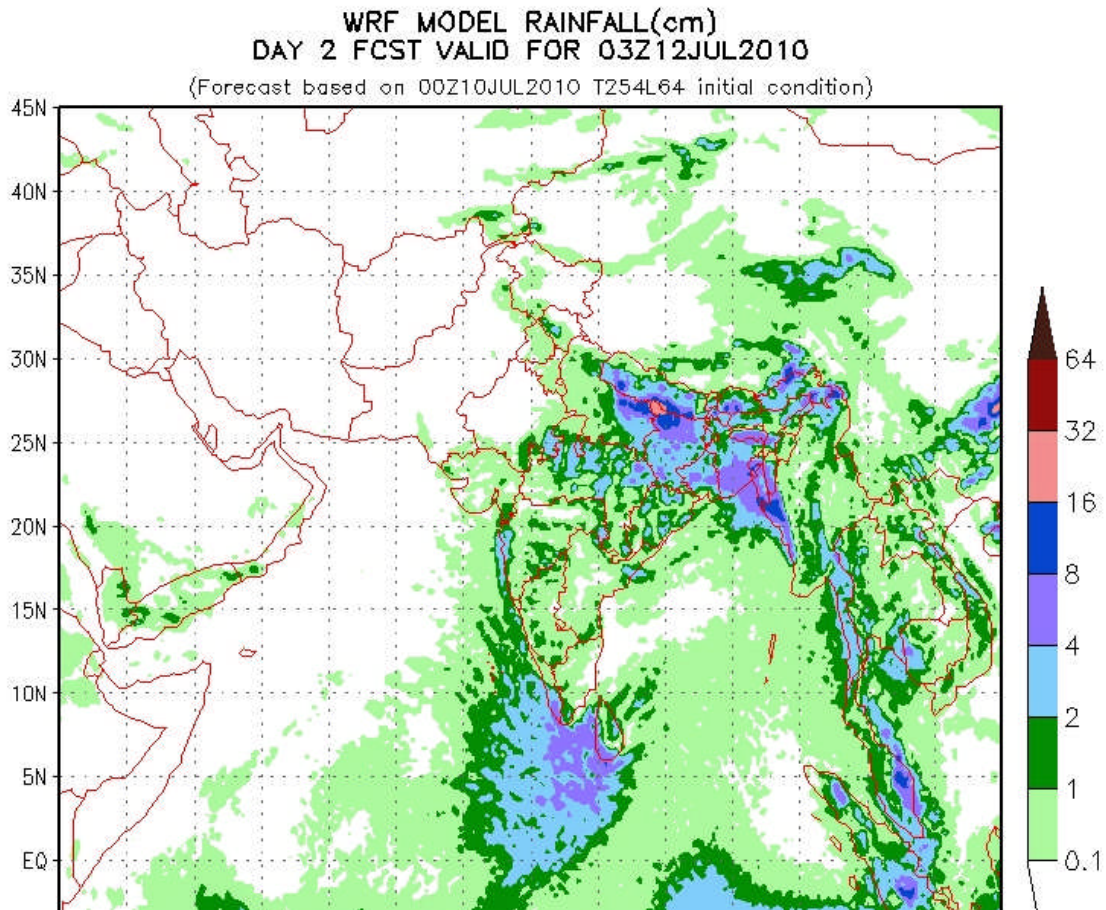
**Figure 1 WRF model rainfall forecast (cm) for 11 July, 2010**

**Flood: There is a flood situation in Narayani.**

- **The water level in Narayani is rising but below warning level.**

**Tomorrow's Forecast**

**Rainfall: Cloudy with rain at many places in the country. Some places in the western part will have rainfall more than 100 mm.**



**Figure 2 WRF Model Rainfall (cm) for 12 July, 2010**

**Flood: There will be flood situation in Karnali, West Rapti and Narayani.**